

Sidewall and leading edge capped  
with round rod welded to sidewall  
edges.

Sit down bar  
prevents walking  
into slide.  
ASTM requirement

Deck is two layers. Top layer is  
diamond plate to allow traction  
and prevent slips at entrance.  
Plate may stop at fascia or may  
extend/overlay a few inches at  
upper elevation.

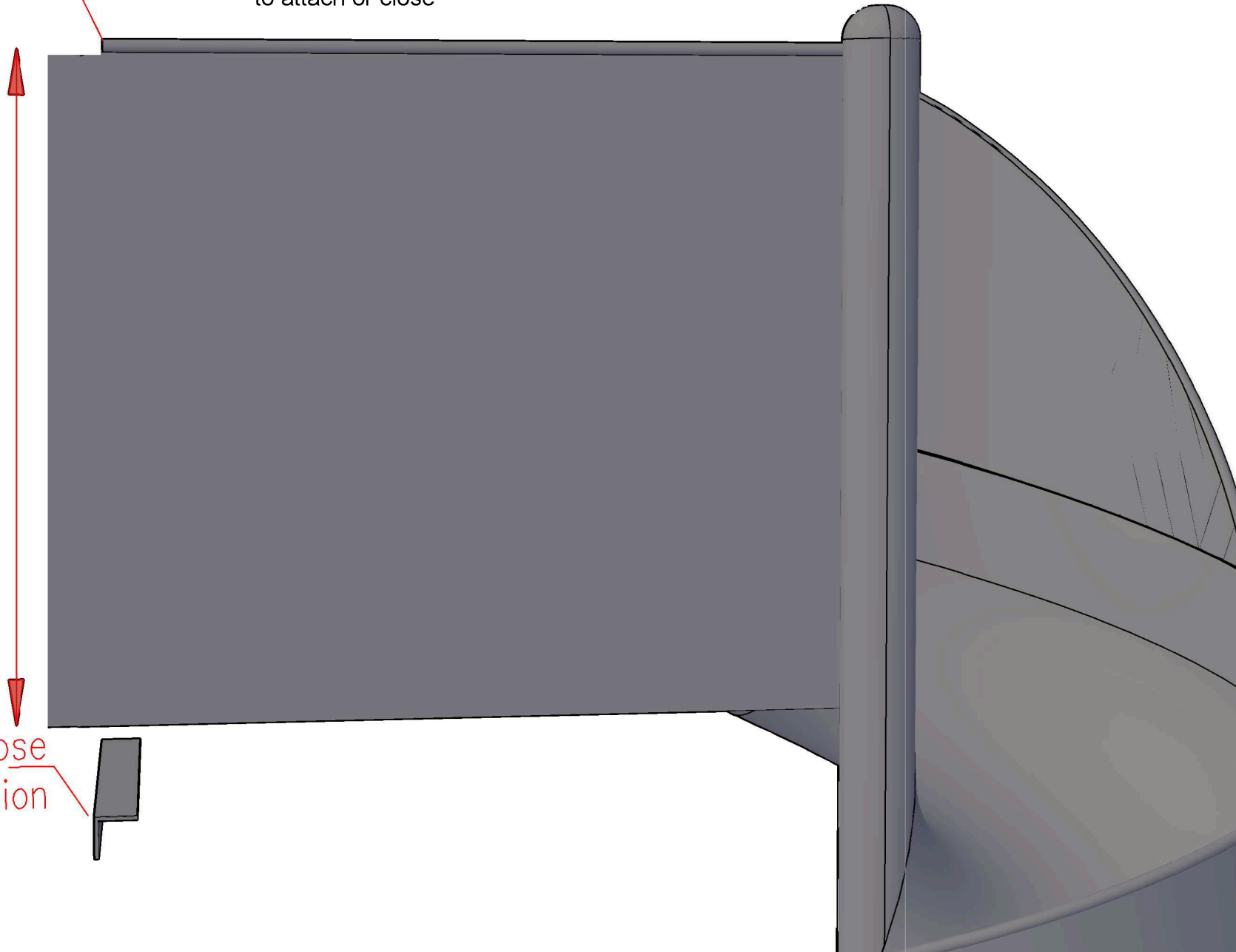
Bracket is powdercoated to match  
color. Shipped loose, At installation,  
join bracket to side and fascia of  
opening at upper level

Many of our designs request the ability to configure the entrance/transition deck to be able to easily attach to the barriers present on the upper elevation. This design modification/option allows for each attachment to a squared edge such as a terminus post on the barrier. Create an opening at your upper level, insert O.D. of the box into the I.D. of your opening and bolt to attach or close

Top Rod Cut Back

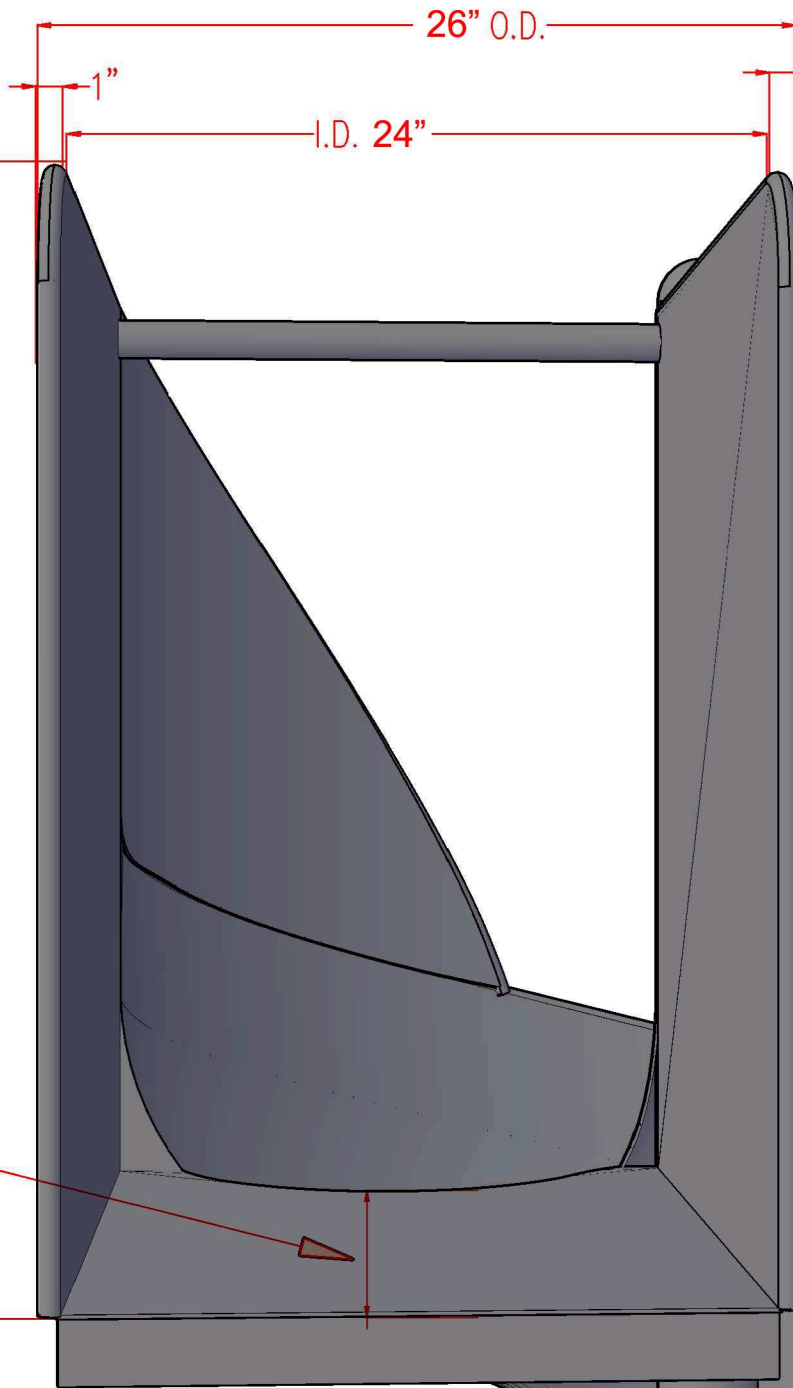
Front (leading edge) rod removed to facilitate flat or flush surface to join to barrier, rail or entrance framing

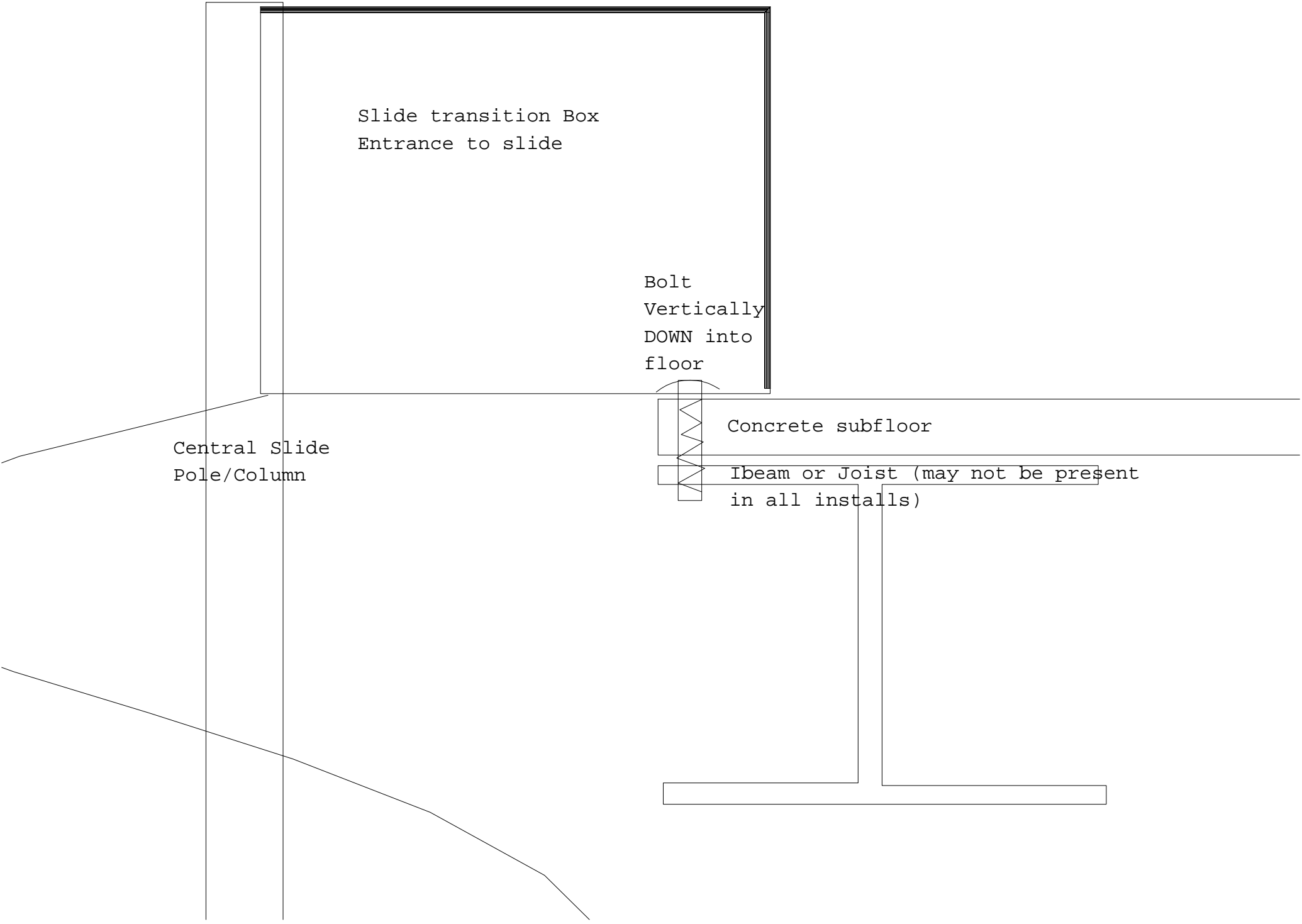
Bracket shipped loose  
Attach at installation



Variable Min 32"  
Preferred = />34"

38" sidewall elevation O.D.





Slide transition Box  
Entrance to slide

Bolt  
Vertically  
DOWN into  
floor

Central Slide  
Pole/Column

Concrete subfloor

Ibeam or Joist (may not be present  
in all installs)

